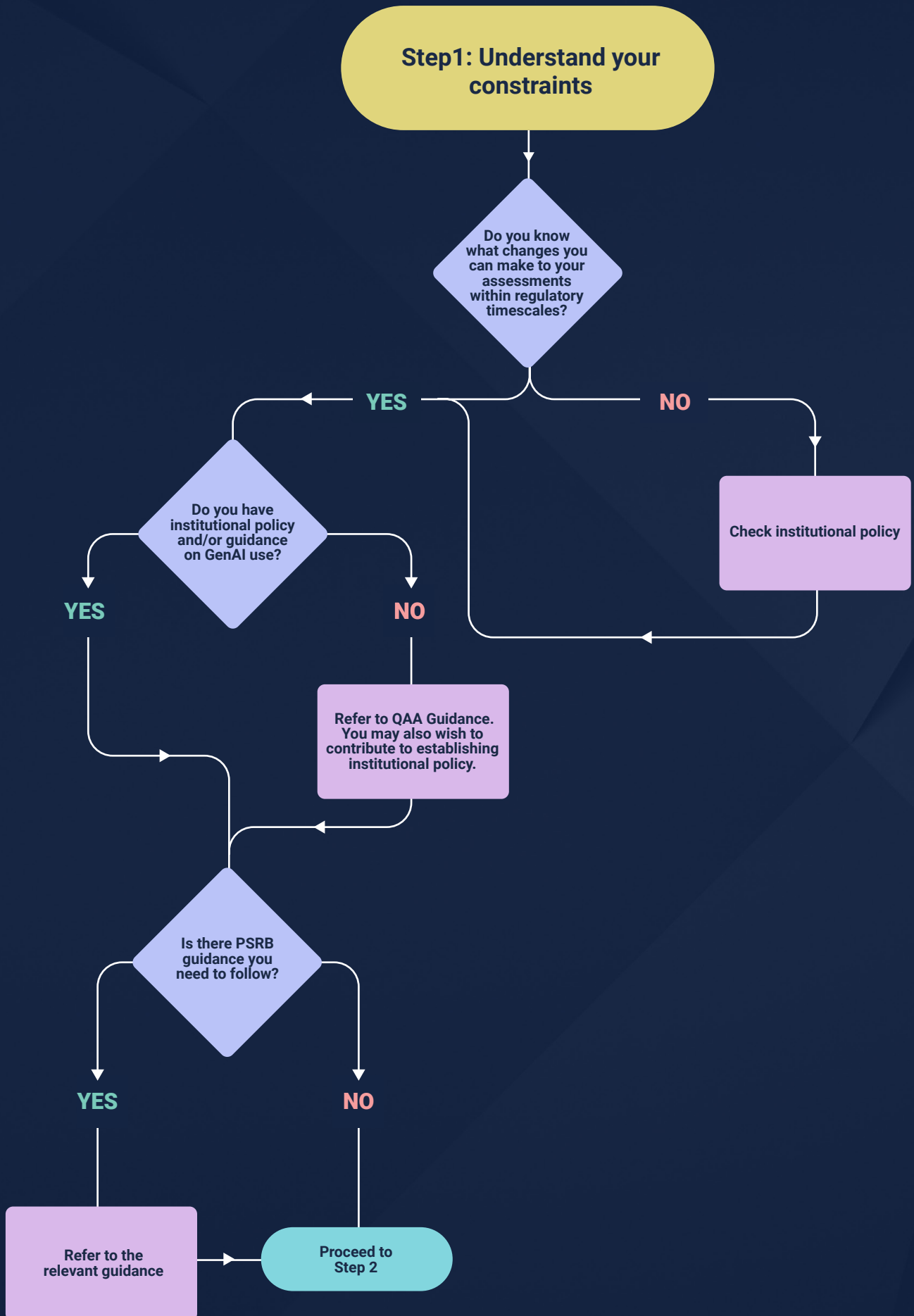
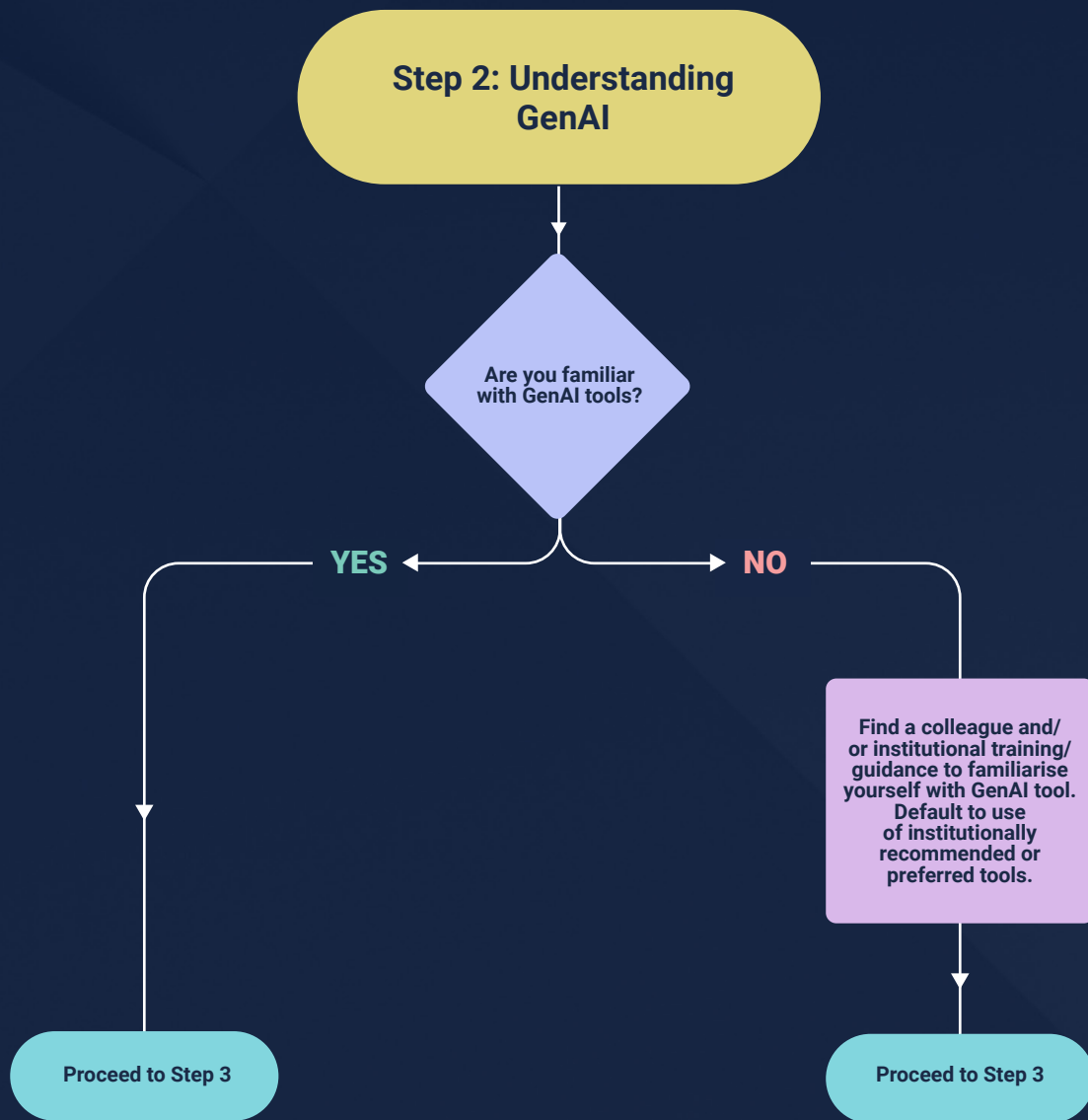


A photograph of three students in a library or study area. A man with glasses and a beard, wearing a green checkered shirt, is pointing at a laptop screen. A woman with blonde hair in a ponytail, wearing a blue jacket, has her hand on his shoulder. Another woman with dark hair, wearing a grey jacket, is smiling and looking at the laptop. They are all holding books or papers. A large teal circle is overlaid on the bottom left of the image.

Embracing Generative AI in Assessments:

A Guided Approach





Step 3: Review your module

Do your module level learning outcomes include reference to GenAI skills?

YES

NO

Can any of your ILOs and/or assessment design include use of GenAI?

Are there any ILOs your students must demonstrate without AI assistance?

YES

NO

YES

NO

Incorporate GenAI in line with institutional or if none refer to resource list for guidance.

Check institutional / faculty guidance. Are changes permitted prior to delivery?

Clearly document these and communicate this to students and include within assignment brief.

Check institutional / Faculty guidance. Are changes allowed?

Proceed to Step 4

YES

NO

Proceed to Step 4

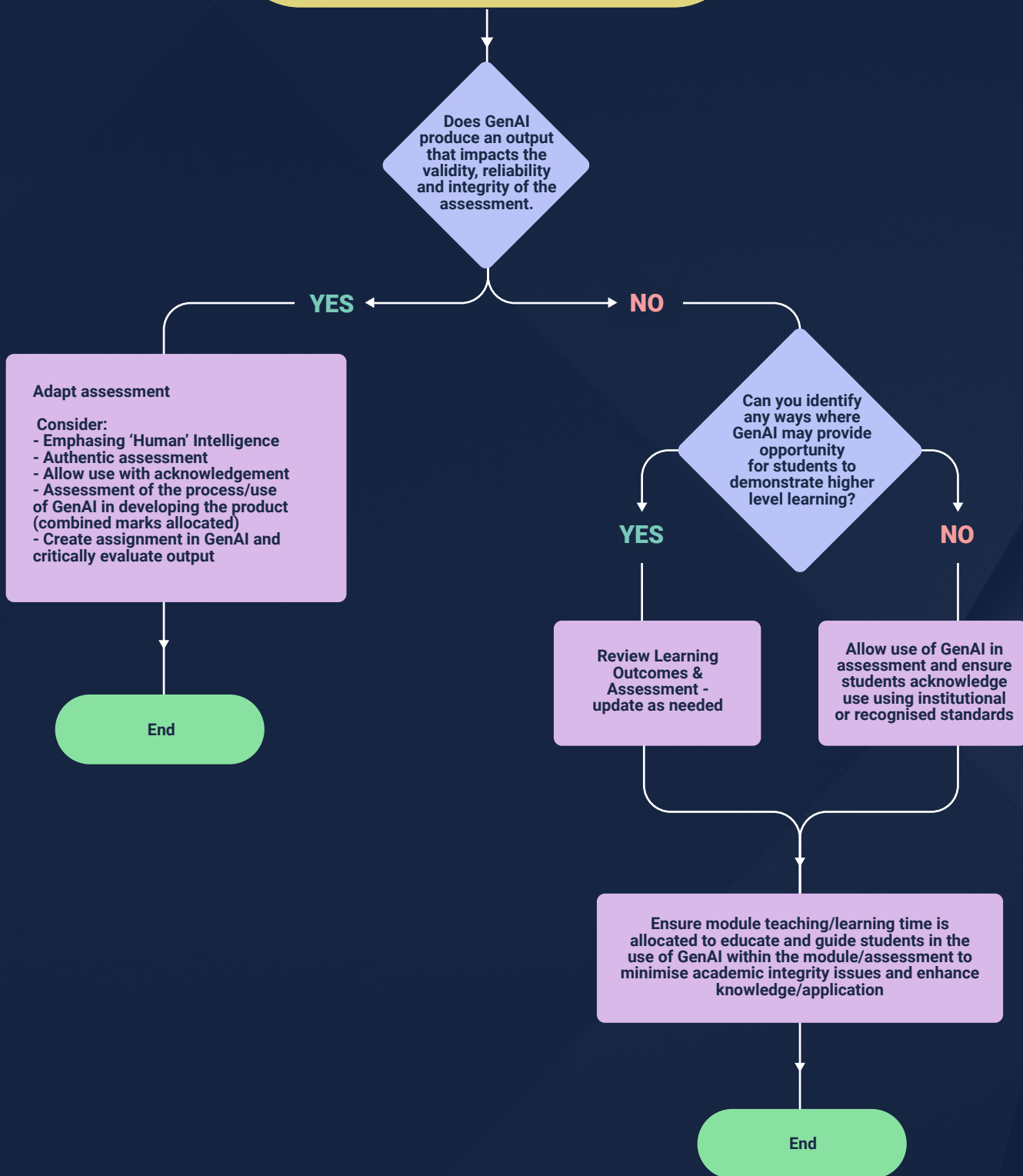
Make changes to ILOs to include GenAI

Although you don't have GenAI ILO's you can still retain option to integrate GenAI into teaching and learning with acknowledgement.

Proceed to Step 4

Discuss with faculty/dept and plan changes for next cycle

Step 4: Review your assessment against GenAI capabilities





Useful Resources

Assessment Advice

[QAA Assessment Advice](#)

[Assessments of Learning Outcomes: Validity and Reliability of Classroom Tests](#)

[Jisc Principles of good assessment and feedback](#)

Assessment approaches using GenAI

[Jisc Assessment approaches in an AI enabled world](#)

[Assessment approaches in an AI-enabled world](#)

[Interactive Oral Assessment: User Guide](#)

[The AI Assessment Scale: Update and Pilot Study](#)

[The SHARE technique for designing assignments and assessments in the age of AI](#)

[101 creative ideas to use AI in education, A crowdsourced collection](#)

[30 Ideas for Generating AI-Resilient Assessments](#)



Jisc
4 Portwall Ln,
Bristol BS1 6NB
0203 697 5800
info@jisc.ac.uk

